

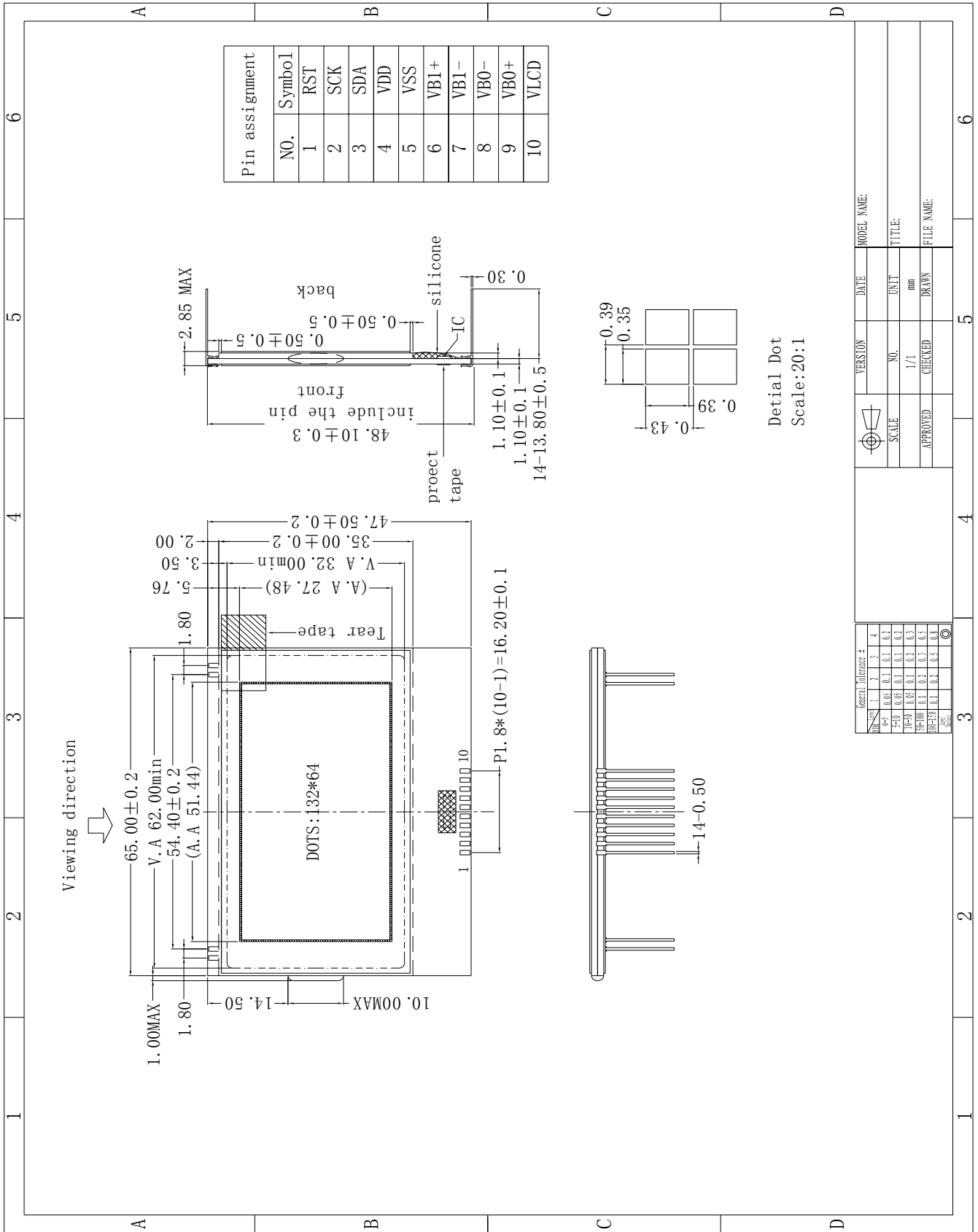
Revision Status

Version	Revise Date	Page	Content	Modified By

1. General Specification

No.	Item	Specification	Unit
1	Outline Dimension	65(W) x 47.5(H) x2.85MAX (D)	mm
2	View Dimension	62(H) x 32(V)	mm
3	Display Type	FSTN	-
4	Viewing Direction	12 O'Clock	-
5	Polarizer Mode	Transflective/Positive/Antiglare	-
6	LCD Drive method	1/65 duty, 1/9 bias	-
7	LCD Drive Voltage	9.0	V
8	Operation Temperature	From -30To 60	°C
9	Storage Temperature	From -35 To 70	°C
10	Driver/Controller IC	UC1601S	-
11	Logic Power Supply Voltage	3.3	V
12	Backlight Unit	N/A	-

2. OUTLINE DIMENSION



Detail Dot
Scale: 20:1

General Tolerance #		VERSION	DATE	MODEL NAME:
NO.	1 2 3 4	NO.	UNIT	TITLE:
0-5	0.5	1/1	mm	FILE NAME:
5-9	0.8	CHECKED	DRAWN	
10-14	1.2			
15-20	1.6			
21-25	2.0			
26-30	2.5			
31-35	3.0			
36-40	4.0			
41-45	5.0			
46-50	6.0			
51-55	8.0			
56-60	10.0			
61-65	12.0			
66-70	15.0			
71-75	20.0			
76-80	25.0			
81-85	30.0			
86-90	40.0			
91-95	50.0			
96-100	60.0			